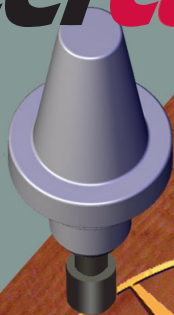


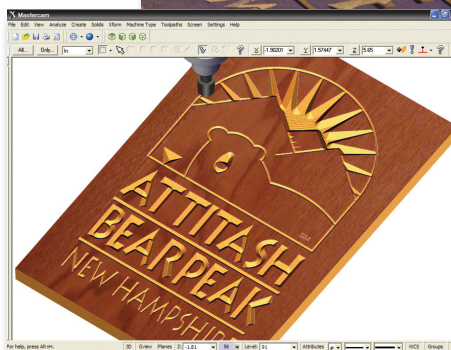
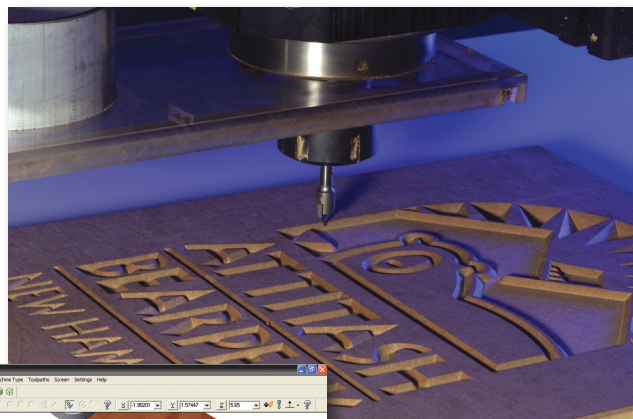
# Mastercam® ENGRAVING



## BRING THE HAND-CARVED LOOK TO YOUR CNC MACHINE

Mastercam brings a unique look of quality to a wide range of products—from signs to artwork to unique molds. Sharp inside corners give the finished piece a crisp edge and a “human touch.”

- Chisel and emboss images.
- Open pixel-based artwork as engrave geometry (.BMP, .GIF, .TIF, and more).
- Easily engrave any TrueType® font.
- Inverse embossing for mold work.
- Use V-groove cutters with any angle.
- Engrave remachining allows you to cut an area with a large tool and automatically remove remaining material with a smaller tool.
- Use constant-volume depth cuts for a more consistent tool load.



*Mastercam gives you complete control over part-to-part distance.*

For more information, visit  
[www.MastercamEngraving.com](http://www.MastercamEngraving.com)



**CNC Software, Inc.**  
671 Old Post Road  
Tolland, CT 06084



**Mastercam®**  
Be Dynamic.™

Mastercam® is a registered trademark of CNC Software, Inc. ©1983-2016. All rights reserved.  
All other trademarks are property of their respective owners.