

The screenshot displays the CIMCO Edit 8.00.47 software interface. The main window shows a 3D model of a lathe machine tooling setup. The left pane contains a list of tool paths, including:

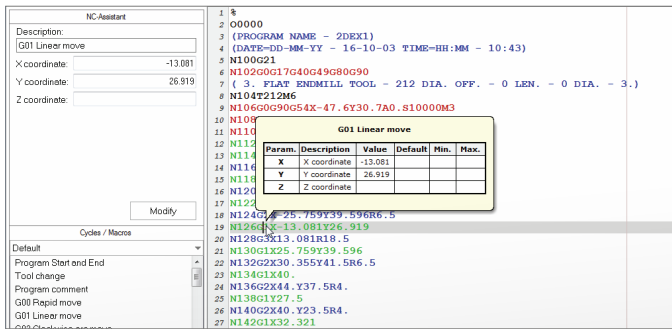
- 56 L Z+100 FMAX
- 57 L R0 FMAX M140 MB MAX
- 58 L Z+370 R0 FMAX M91
- 59 L X+250 Y+200 FMAX M91
- 60 CYCL DEF 32.0 TOLERANCE
- 61 CYCL DEF 32.1 T+.01
- 62 CYCL DEF 32.2 HSC-MODE:0 TA+.1
- 63 CYCL DEF 7.0 DARM SHIFT
- 64 CYCL DEF 7.1 X+0
- 65 CYCL DEF 7.2 Y-75
- 66 CYCL DEF 7.3 Z-90
- 67 PLANE SPATIAL SPA-90 SPC+0 TURN FMAX SEQ+
- 68 L X-126.09 Y+85.1 FMAX
- 69 L Z+107.55 FMAX
- 70 L Z+8.55 FMAX
- 71 L Z+5.2 F3000
- 72 L X-82.55 RL F2700
- 73 L X+82.55
- 74 L X+126.09 R0
- 75 L Z+15.2 FMAX
- 76 L X-126.09 Y+43.1 FMAX
- 77 L Z+8.55 FMAX
- 78 L Z+5.2 F3000
- 79 L X-82.55 RL F2700
- 80 L X+82.55
- 81 L X+126.09 R0
- 82 L Z+15.2 FMAX
- 83 L X-126.09 Y+1.1 FMAX
- 84 L Z+8.55 FMAX
- 85 L Z+5.2 F3000
- 86 L X-82.55 RL F2700
- 87 L X+82.55
- 88 L X+126.09 R0
- 89 L Z+15.2 FMAX
- 90 L X-126.09 Y+85.1 FMAX
- 91 L Z+6.2 FMAX
- 92 L Z+2.85 F3000
- 93 L X-82.55 RL F2700
- 94 L X+82.55
- 95 L X+126.09 R0
- 96 L Z+12.85 FMAX
- 97 L X-126.09 Y+43.1 FMAX
- 98 L Z+6.2 FMAX
- 99 L Z+2.85 F3000
- 100 L X-82.55 RL F2700
- 101 L X+82.55
- 102 L X+126.09 R0

The right pane shows the 'Geometry Manager' with a list of geometries (B, C, Table, X, Y, Z) and workpieces (GodMillTest - Height 320.647). The bottom status bar indicates the current tool is '25' and the feed rate is 'Rapid'.

As a CNC programmer or machinist on the shop floor, responsible for creating or editing CNC programs, you need a professional tool that is fast and flexible. With over 100,000 licenses distributed in the past few years, CIMCO Edit is the editor-of-choice for CNC programmers who demand a full-featured and reliable, cost-effective professional editing and communication tool.

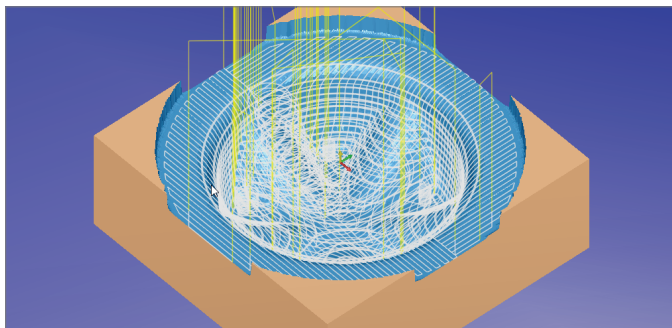
FAST, NC-DEDICATED EDITOR	✓
GRAPHICAL BACKPLOTTER	✓
SAVE NC BACKPLOTS AS DXF FILES	✓
FASTER EDITING WITH NC-ASSISTANT	✓
CYCLE/MACRO SUPPORT	✓

SIDE-BY-SIDE FILE COMPARE	✓
DNC RS-232 COMMUNICATIONS	✓
BASIC 2D CAD/CAM	OPTIONAL ADD-ON ✓
DOCUMENT MANAGEMENT	OPTIONAL ADD-ON ✓
MACHINE SIMULATION	NEW ✓



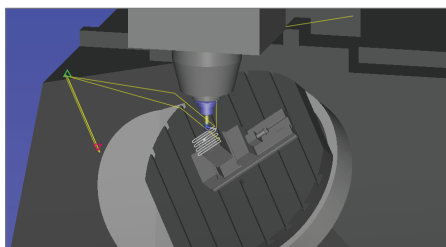
## FASTER EDITING WITH NC-ASSISTANT

NC-Assistant identifies any M or G code you point at and provides a dynamic interface for modifying its values. In addition it allows you to quickly insert, edit and record complex cycles and macros. Common operations are included such as program start, program stop, tool change, and more.



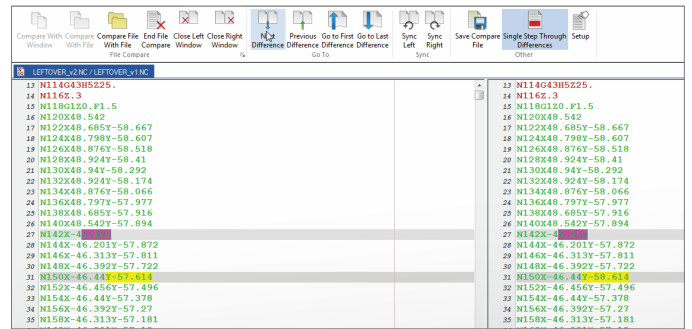
## GRAPHICAL BACKPLOTTER

The graphical backplotter handles 5-axis Mill, 2-axis Lathe and 5-Axis Mill-Turn CNC programs and supports solid visualization of NC code with toolholder collision check and gouge detection. Program changes are automatically reflected in the plot. Analyze the plot with dynamic zoom, pan, rotate and measuring functions.



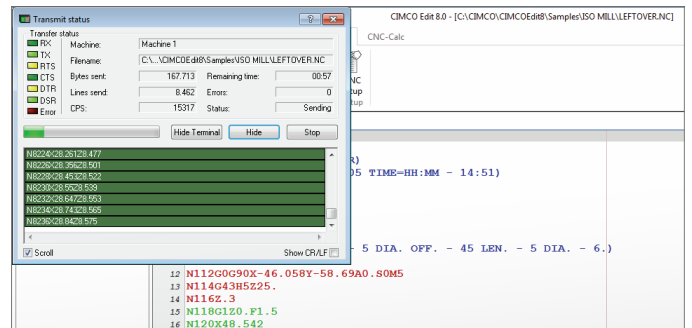
## MACHINE SIMULATION NEW

CIMCO Machine Simulation helps protect expensive CNC machine tools against potentially disastrous crashes and collisions by providing simulation of all types of CNC machine tools in a virtual machining environment.



## INTELLIGENT FILE COMPARE

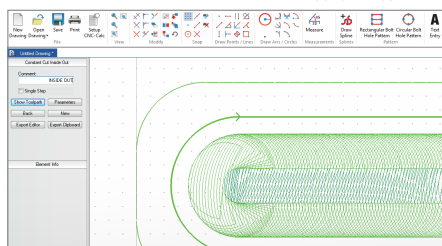
The fully configurable side-by-side file compare quickly identifies changed and deleted/inserted lines, but ignores trivial format changes like block renumbering and spacing. Differences are displayed one line at a time, all at once or printed side-by-side for offline review.



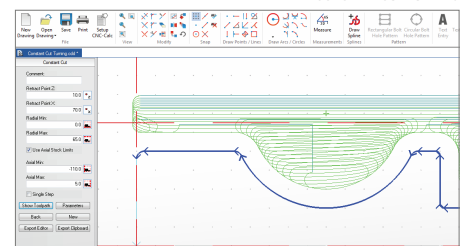
## CNC COMMUNICATIONS AND DNC

CIMCO Edit includes DNC capabilities for reliable RS-232 communications with a variety of CNC controls. With the DNC option you can send and receive CNC programs to multiple machines simultaneously from inside CIMCO Edit.

CONSTANT CUT MILLING



CONSTANT CUT TURNING



## CIMCO CNC-CALC - BASIC 2D CAD/CAM

CIMCO CNC-Calc is an easy to use CAD/CAM that enables programmers to draw 2D geometrical contours.

### STRATEGIES FOR 2D MILLING

CONSTANT CUT, FACING, CONTOURING, POCKET, DRILLING, THREAD MILLING, LETTER MILLING

### STRATEGIES FOR 2D TURNING

CONSTANT CUT, ROUGHING, FACING, FINISHING, GROOVING, THREAD, CUTOFF

SUPPORTS DXF FILES



**www.cimco.com**  
FOR MORE INFORMATION PLEASE VISIT OUR WEBSITE

CIMCO A/S  
VERMUNDSGADE 38A  
COPENHAGEN, DENMARK

CIMCO AMERICAS LLC  
651 S SUTTON ROAD, SUITE 276  
STREAMWOOD, IL 60107, USA

