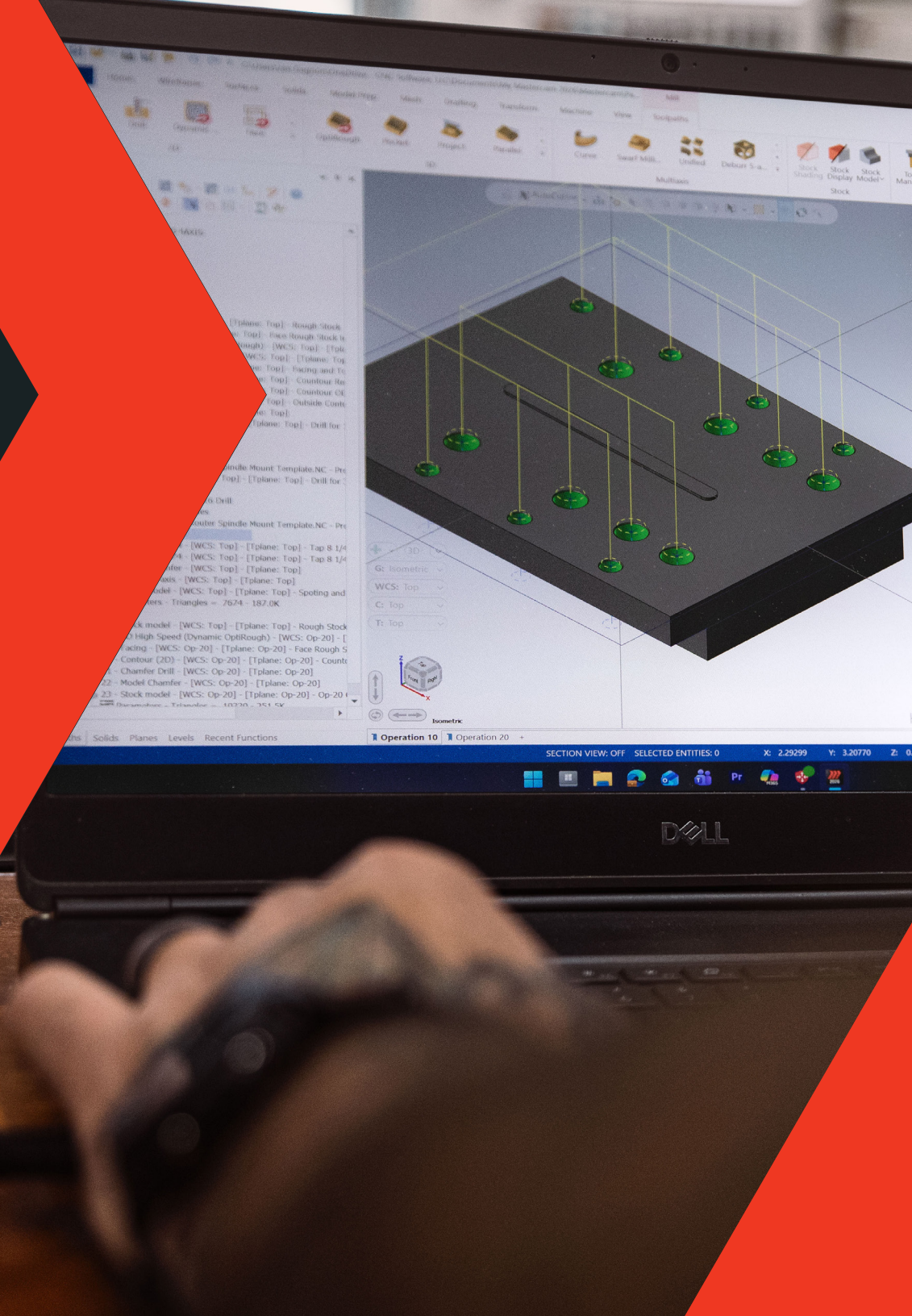




# WHAT'S NEW IN MASTERCAM 2026.R2

- › GPU simulation
- › AI-enabled automation
- › New probing integration
- › Multiaxis improvements

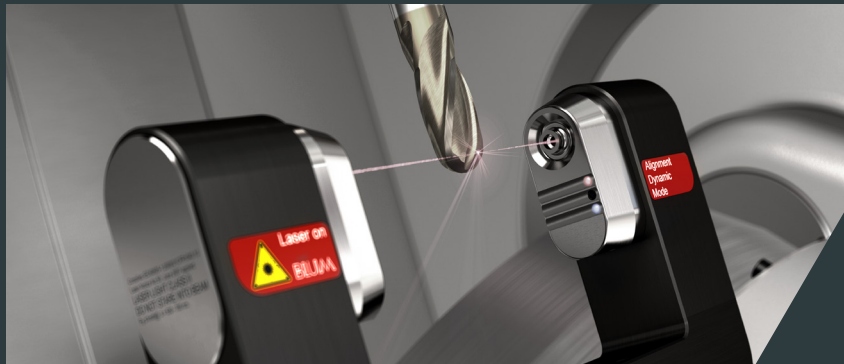


# WHAT'S DIFFERENT

---

This release focuses on the feedback we hear most often from shops like yours—simulation that keeps pace with your deadlines, automation that handles repetitive tasks, and tools that eliminate time-consuming manual work.

We have addressed real workflow bottlenecks: verification delays, repetitive programming routines, and other workflow steps that slow you down.



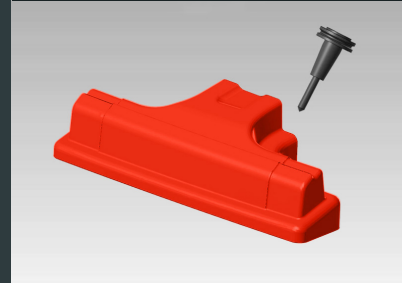
# PROBING INTEGRATION

---

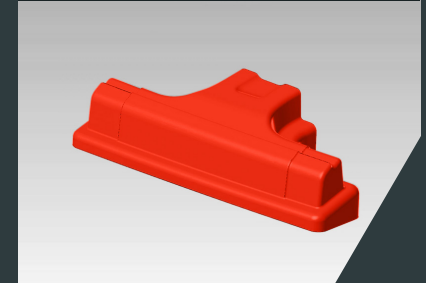
**Blum Digilog Tool Setter support:** Handle tool setting, wear monitoring, and breakage detection directly in Mastercam—no manual code editing required.

Works with Fanuc, Siemens, Okuma, Heidenhain, Mazak, and Makino controls. Keep your tool data centralized and current.

00:22:02  
GPU Simulation: ON



01:28:13  
GPU Simulation: OFF



# GPU-ACCELERATED SIMULATION

---

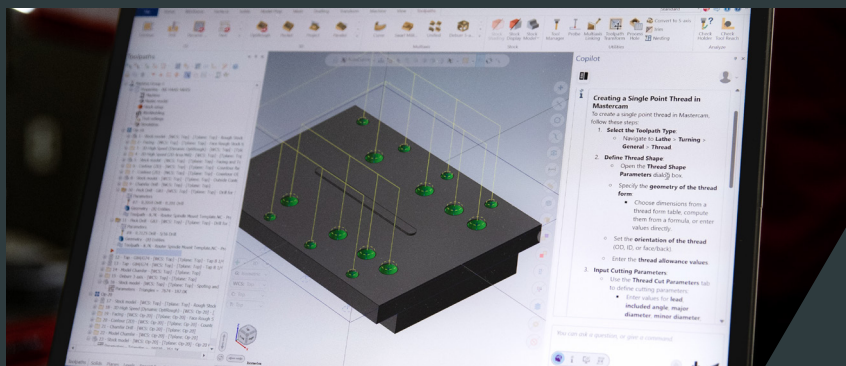
Run verification on complex parts without the wait. GPU simulation delivers up to 10x speed improvement over CPU simulation while maintaining high-resolution results.

## What this means for your workflow:

- › Verification that runs up to 10x faster
- › High-resolution simulation without extended processing time
- › Thorough collision detection and material analysis when you need it

Check for collisions, analyze stock removal, and verify multi-operation processes without compromising your schedule.





# MASTERCAM COPILOT – AI-POWERED ASSISTANCE

Adjust parameters across multiple operations using voice or text commands. Set up entire machine groups by describing your requirements. Find specific information in training content instantly.

**Feed and Speed Adjustments:** Change feed rates and spindle speeds by voice or text. Works with Mill, Lathe, and Router operations. Includes confirmation prompts for safety. Modify individual operations or update multiple at once.

**Machine Group Setup:** Build complete machine groups with your naming conventions. Add operations as you create the setup (supports ~200 toolpath types).

**Hands-Free Operation:** Voice-activated control using the keyword “Copilot.” Toggle on or off as needed with configurable activation settings.

**Video Content Search:** Search your entire myMastercam video library. Get answers with timestamps linking directly to relevant sections.



# MULTIAXIS IMPROVEMENTS

**Bullnose collision control:** Automatic Tilting Collision Control now works with bullnose tools. Use shorter tools with simpler setups—the software manages tilting for collision-free 5-axis paths. Reduces tool stick-out and generates smooth motion without manual configuration.

**4-axis finishing improvements:** Better tool axis control translates to improved surface finish, more accurate results, and greater flexibility in tool selection.

**Automatic clearance moves:** The software calculates safe linking moves based on your part geometry, reducing cycle time and eliminating manual clearance planning.

**Optimized level-based ordering:** Minimize unnecessary retracts between cutting regions. Allows shorter, more rigid tooling on complex geometries and reduces overall cycle time.

# READY TO SEE WHAT MASTERCAM 2026.R2 CAN DO FOR YOUR SHOP?

Contact your local Mastercam representative to schedule a demonstration or download a trial version. Learn more at [mastercam.com](https://www.mastercam.com)

Get free access to every update:

**Mastercam CONNECT** maintenance and support program gives you access to every release at no additional cost. Stay current with the latest features, improvements, and capabilities as they become available.



[mastercam.com](https://www.mastercam.com)

Mastercam® is a registered trademark of CNC Software, LLC. All other trademarks are property of their respective owners.  
©1983-2026. All rights reserved.

